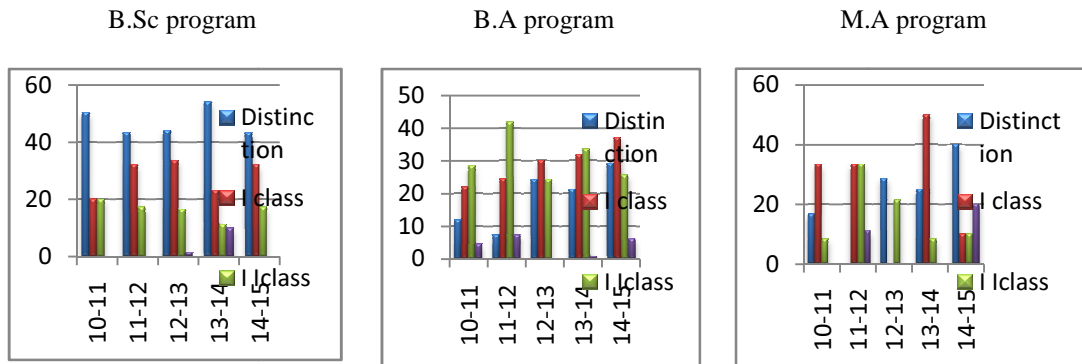


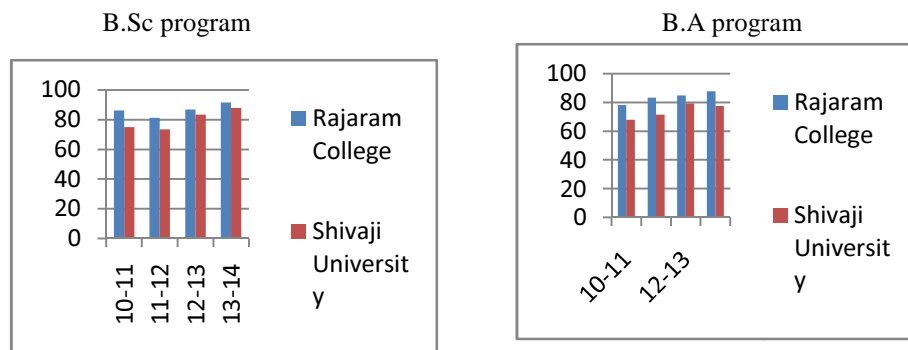
The analytical diagrams reveal that the Percentage of results for B.Sc., B.A and M.A is constantly increasing with the exception of M.A in 2012-13.



The above analytical diagrams indicate:

- The percent range of distinctions in the B.Sc examinations is between 45-55.
- The percent range of distinctions in the B.A examinations is between 12-28.
- The percent range of distinctions in the M.A examinations is between 17-40.

The comparison of the results of the College with those of University:



- It is significant to note that compared to the results of University examinations (of B.Sc and B.A), the result of the Institution are always higher and increasing.